

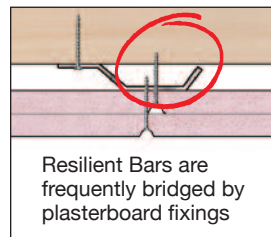
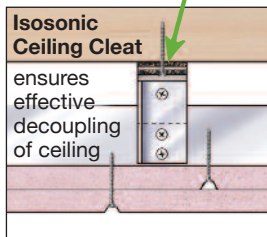
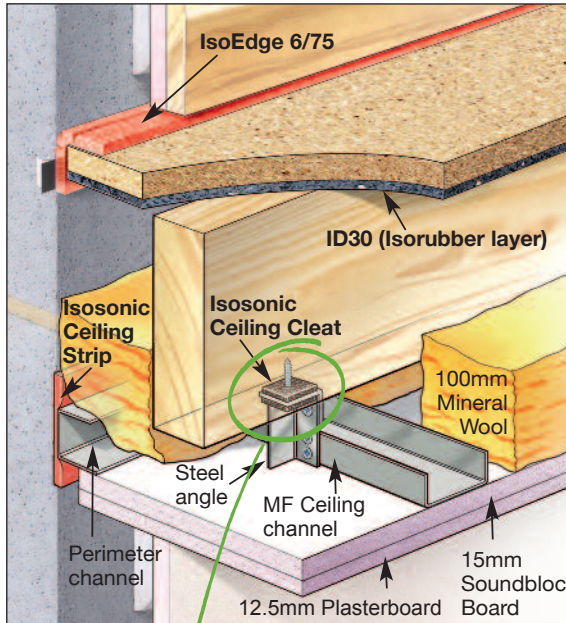
ACOUSTIC FLOATING FLOORS RANGE - **STRUCTURAL DECK**



Acoustic boards for
refurbishment solutions



See reverse for key of easy to follow icons



ADVANTAGES OF ISOSONIC CEILING CLEATS

ISOSONIC CEILING CLEATS eliminate acoustic bridging caused by the frequent faulty installation of 'resilient bars'

Site Test Results

The table shows typical site test results on sites with a construction of ID30 used as the structural deck, 200mm (max) timber joists with 100mm mineral wool between, and an MF ceiling system, IsoSonic Cleats or Brackets with 2 layers of plasterboard below.

Test Data

Approved Doc Part E Refurb Test Requirements	Typical Site Test Results	Average site test improvement over Approved Doc. Part E requirements
Airborne Sound DnTw + Ctr	Airborne Sound DnTw + Ctr	Airborne Sound Rw + Ctr
Minimum Value 43dB	Average Value 50dB	Improvement 7dB
Impact Sound Ln tw	Impact Sound Ln tw	Impact Sound Ln tw
Maximum Value 64dB	Average Value 58.8dB	Improvement 5.2dB

DIRECT TO JOIST ACOUSTIC FLOORING SYSTEM FOR REFURBISHMENT PROJECTS

Products: ID30, IsoSonic Brackets, IsoSonic Ceiling Strip, IsoEdge.

Application: 30mm thick acoustic structural floor for use on timber and concrete floors.

Features:



Finishes:



- Single fit acoustically insulating structural deck
- Free floating, glued T&G joints, no fixings to joists
- High density ISORUBBER (900kg/m²) base layer provides superior and sustained acoustic insulation
- Engineered self adhesive flanking insulation strips
- Improved acoustic floor to ceiling decoupling
- Available with optional 'peel clean' protective layer

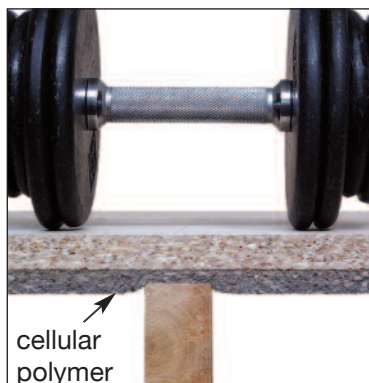
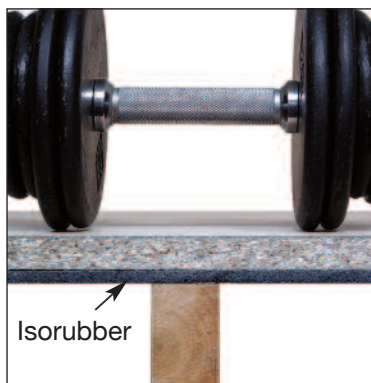
Suitable for use as a structural deck in floor types including:



ID30 consists of 22mm flooring grade chipboard bonded to 8mm high density (910kg/m³) Isorubber.

Isorubber is a hard, durable product with high impact and airborne sound absorption properties.

UTILISING THE ADVANTAGES OF ISORUBBER



Lasting Performance

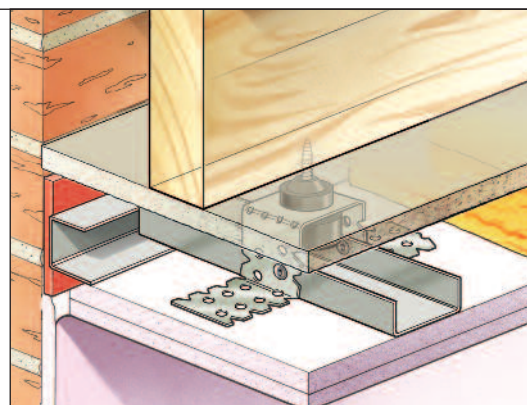
Isorubber products are durable, thin and dense. Unlike soft cellular polymer products they undergo virtually no short or long term compression under normal floor loads.

This eliminates floor movement and deflection and assures that the full initial acoustic performance is maintained throughout the life of the building.

Retained ceiling detail for refurbishment- IsoSonic Ceiling Bracket

Up to 17dB effective impact sound reduction.

Allows the new sound insulating fire protective ceiling to be installed without the removal of the existing ceiling.



This brochure features just one of our products- ID30 structural deck. Please visit our website at www.thermal-economics.co.uk for details of products not shown in this index.

To discuss project specific solutions please call our Technical Department on 01582 544255.

We are constantly developing products and solutions, this means that we are always interested in testing opportunities. Please contact our Technical Department for details on the benefits of testing with us.

FLOATING FLOOR DETAILS

ID30 is designed to have fully glued T&G joints enabling it to freely float over the floor joists, without any mechanical fixings in order to reduce structural sound bridging.

It is important to fit **IsoEdge** around the full floor perimeter in order to prevent airborne sound leakage and to allow for the possible expansion movement of the monolithic floor deck.

IMPORTANT: FLANKING SOUND TRANSMISSION

The acoustic test measurements for any given floor/ceiling construction will be greatly influenced by the **flanking sound transmission** around the perimeter of the floor. Therefore any set of acoustic measurements should only be used for predicting the performance of floors with similar constructions and flanking conditions.

The magnitude of the flanking sound transmission can in particular be influenced by

the density and the integrity of the flanking wall, and **by the effectiveness of the air seal at the floor to wall and ceiling to wall junctions** i.e by connecting air paths.

VERY IMPORTANT: The floor and ceiling to perimeter wall junctions must be fully sealed in accordance with the recommendations of the Installation Guide.

Please refer to our website for the **full Installation Instructions**

FEATURES KEY



Floor construction achieves Part E compliance, pre-completion testing is required.



Peel-clean removable protective surface.



Structural deck and acoustic insulation combined. Can be directly fitted over joists as a floating floor.



Floor system suitable for use with timber and metal framed wall constructions.



Acoustic layer suitable for use with all types of under floor heating system.

FLOOR SUITABILITY KEY



FLOOR FINISHES KEY



Suitable for use below all types of carpet.



Suitable for use below vinyl floor finishes.



Suitable for use below wooden floor finishes.



Suitable for use below all types of floor tile.

Thermal Economics is an insulation leader in thermal and acoustic solutions for the construction market. As specialists in this field with over 30 years of success,

we continually invest in R&D to provide innovative and high-performance solutions that remain cost effective as well as meet and exceed building regulation requirements.



T: 01582 450814

E: info@thermal-economics.co.uk

W: www.thermal-economics.co.uk



Visit our website for mobile friendly installation guides



For help choosing the right product for your project please contact Thermal Economics Technical Department on 01582 544255

For all our Acoustic & Thermal insulation products visit: www.thermal-economics.co.uk