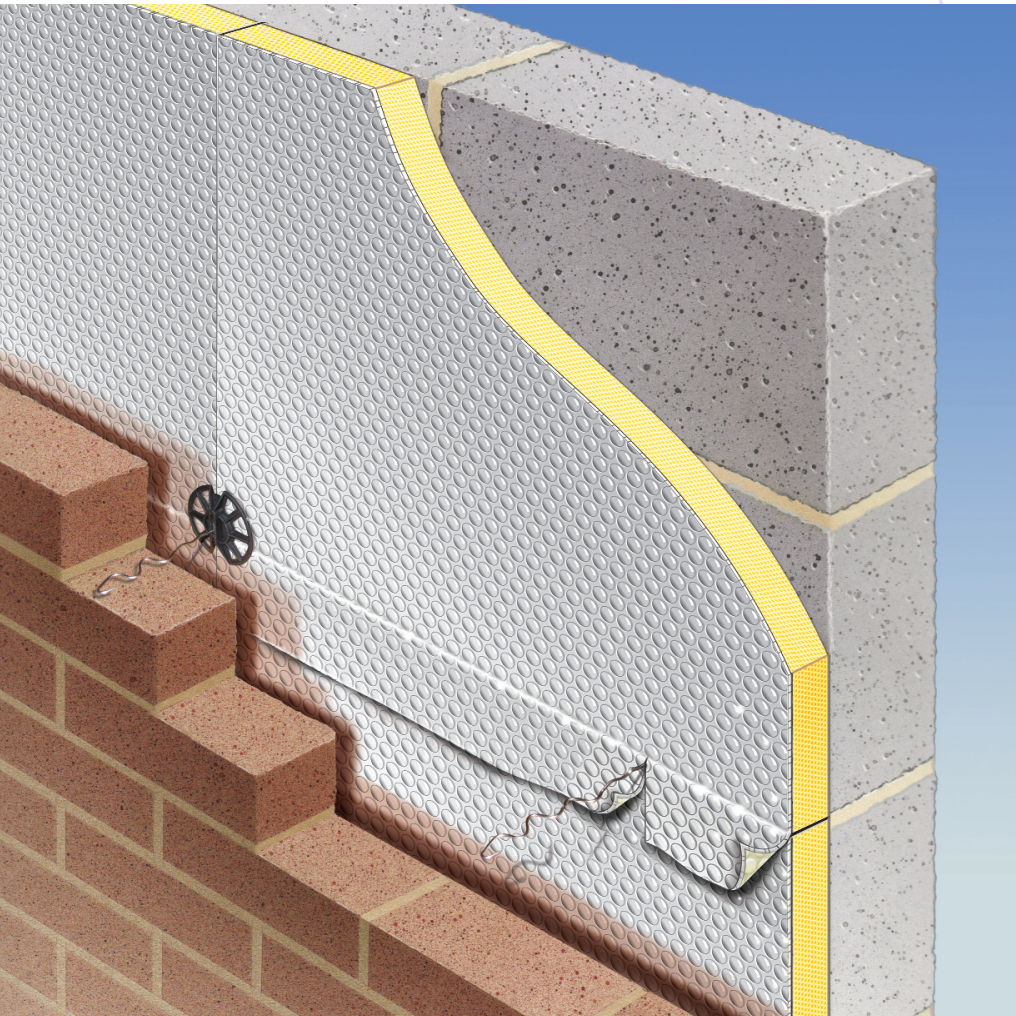




# ALREFLEX® ULTRA THERM



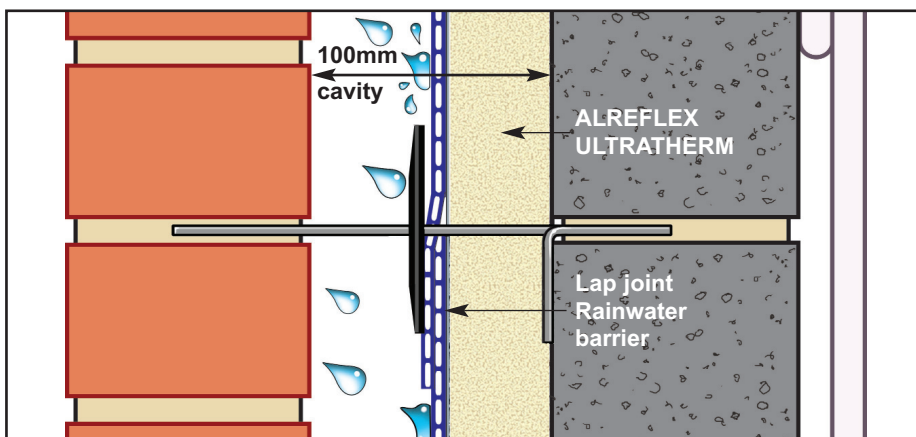
## THE THINNEST BBA CERTIFICATED SOLUTION TO PART 6 SCOTTISH STANDARDS DOMESTIC ENERGY 2010



### High performance partial fill rain barrier & cavity insulation board

- ▶ A 50mm thickness of Alreflex Ultratherm board can achieve a U-Value below **0.24W/m<sup>2</sup>K** in a 100mm cavity (see back page).
- ▶ This detail and others shown will easily meet the requirements of Part 6 Scottish Standards Domestic Energy 2010.
- ▶ BBA Certificated product of a PUR/PIR board laminated to Alreflex 1L, of which 5 million sq. m. has been successfully installed in UK housing.
- ▶ Unique BBA Certificated cavity rain barrier based on overlapping joints to prevent ingress of water across the cavity. **Suitable for all exposure areas.**
- ▶ Can be used to rainproof walls etc.

### WALL SECTION LAP JOINT DETAIL



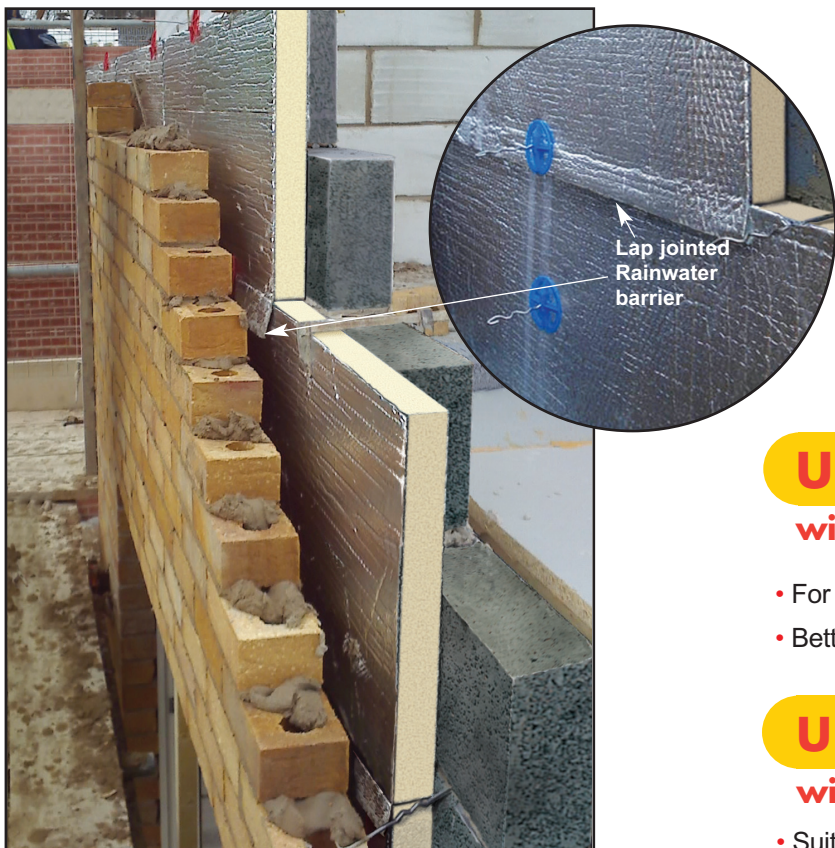
*Based on our extensive experience of providing SAP and Code Level calculations for our large UK House Builder clients, our Technical Staff are confident in being able to provide you with the most cost-effective design solutions for your particular project.*

*Please contact them direct on 01582 544255.*

**Thermal Economics**  
THERMAL & SOUND INSULATION TECHNOLOGY

**Please visit our website for the full range of Thermal and Sound Insulation products at [www.thermal-economics.co.uk](http://www.thermal-economics.co.uk)**

# THE THINNEST BBA CERTIFICATED SOLUTION TO PART 6 SCOTTISH STANDARDS 2010



## 50mm THICK ALREFLEX ULTRATHERM CAVITY INSULATION BOARD & CAVITY RAIN BARRIER WITH PLASTERBOARD ON DOT/DAB FIXING

Laps provide a continuous waterproof barrier against the ingress of rain water etc. **Suitable for all exposure areas.**

**U= 0.24w/m<sup>2</sup>k**

**with 100mm (k=0.11) aerated block**

- For walls in Scottish Standards 2010 Part 6 Table a.
- Better than 0.25 area weighted average U-value.

**U= 0.25w/m<sup>2</sup>k**

**with 100mm (k=0.19) aerated block**

- Suitable for 3-storey housing and flat construction.

*Suitable for all exposure zones.*

For even lower U-Values use the 50mm Alreflex Platinum board together with a laminate board or alternatively the thinner Alreflex 1L-1 dry lining solution all as shown in the details to the right. This detail produces enhanced U-Values as follows:

**U= 0.20w/m<sup>2</sup>k**

**with 100mm (k=0.11) aerated block**

- Suitable for all areas and projects where a low U-value is required (i.e. in electrically heated flats, etc.)
- High comfort level with quick "heat-up" period.

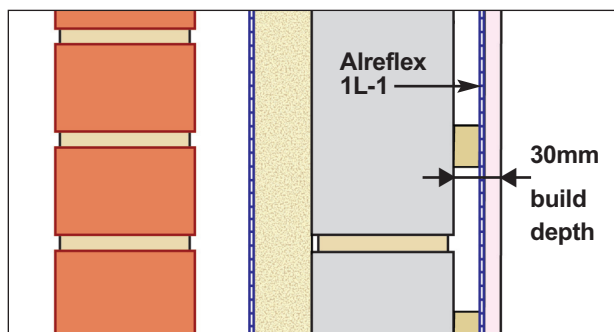
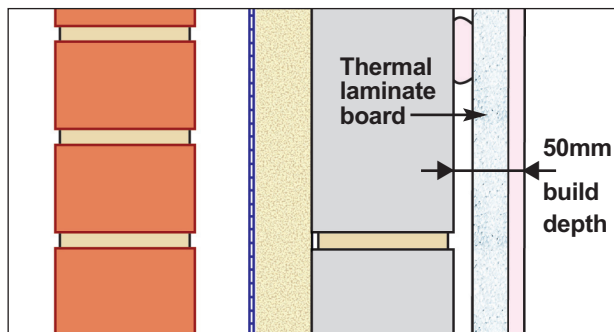
**U= 0.22w/m<sup>2</sup>k**

**with 100mm (k=0.19) aerated block**

- Suitable for 3-storey housing and flat construction.

### ENVIRONMENTAL BENEFITS:

- ▶ NO CFC or HCFC gases employed
- ▶ ZERO ODP (ozone depletion potential)
- ▶ ZERO GWP (global warming potential grading)



**Build depth comparison between thermal laminate board and the thinner Alreflex 1L-1 dry lining solution.**

**Please contact our Technical Department for suitable alternative dot-dab boards and thicknesses.**

Thermal Economics Ltd Thermal House 8 Cardiff Road Luton Bedfordshire LU1 1PP

Tel:01582 450814 Fax:01582 429305 E-mail:info@thermal-economics.co.uk Web:www.thermal-economics.co.uk

**PLEASE CONTACT OUR TECHNICAL DEPARTMENT ON 01582 544255 FOR SOLUTIONS TO YOUR DEVELOPMENT**