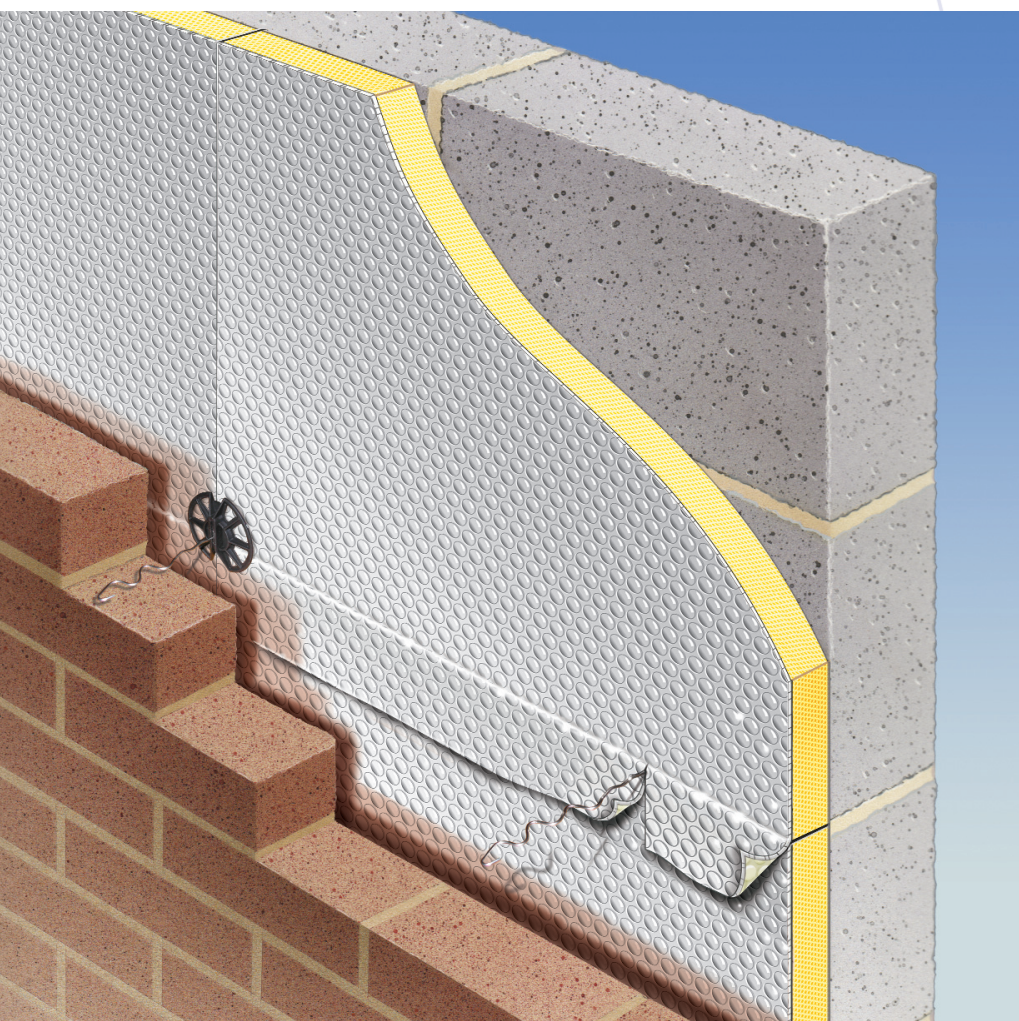


ALREFLEX® ULTRA THERM



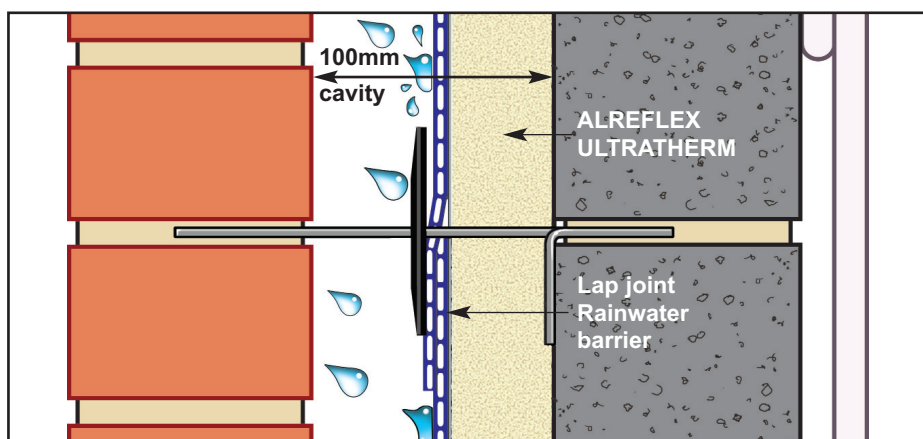
THE THINNEST BBA CERTIFICATED SOLUTION TO PART L 2010 AND CODE FOR SUSTAINABLE HOMES



High performance partial fill rain barrier & cavity insulation board

- ▶ A 50mm thickness of Alreflex Ultratherm board can achieve a U-Value below **0.24W/m²K** in a 100mm cavity (see back page).
- ▶ This detail and others shown will easily meet the requirements of Part L 2010 and Code Levels.
- ▶ BBA Certificated product of a PUR/PIR board laminated to Alreflex 1L, of which 5 million sq. m. has been successfully installed in UK housing.
- ▶ Unique BBA Certificated cavity rain barrier based on overlapping joints to prevent ingress of water across the cavity. **Suitable for all exposure areas.**
- ▶ Can be used to rainproof walls etc.

WALL SECTION LAP JOINT DETAIL



Based on our extensive experience of providing SAP and Code Level calculations for our large UK House Builder clients, our Technical Staff are confident in being able to provide you with the most cost-effective design solutions for your particular project.

Please contact them direct on 01582 544255.

Thermal Economics
THERMAL & SOUND INSULATION TECHNOLOGY

THE THINNEST BBA CERTIFICATED SOLUTION TO PART L AND CSH REQUIREMENTS



50mm THICK ALREFLEX ULTRATHERM CAVITY INSULATION BOARD & CAVITY RAIN BARRIER WITH PLASTERBOARD ON DOT/DAB FIXING

Laps provide a continuous waterproof barrier against the ingress of rain water etc. **Suitable for all exposure areas.**

U= 0.24w/m²k

with 100mm (k=0.11) aerated block

- Better than 0.25 area weighted average U-value.

U= 0.25w/m²k

with 100mm (k=0.19) aerated block

- Suitable for 3-storey housing and flat construction.

Suitable for all exposure zones.

For U-Values as Low as 0.20 W/m²K use a 50mm Alreflex Ultratherm cavity wall board together with a laminate dry lining board or alternatively the much thinner BBA certified Alreflex 1L-1 dry lining solution

ENVIRONMENTAL BENEFITS:

- ▶ NO CFC or HCFC gases employed
- ▶ ZERO ODP (ozone depletion potential)
- ▶ ZERO GWP (global warming potential grading)

Thermal Economics Ltd Thermal House 8 Cardiff Road Luton Bedfordshire LU1 1PP

Tel:01582 450814 Fax:01582 429305 E-mail:info@thermal-economics.co.uk Web:www.thermal-economics.co.uk

PLEASE CONTACT OUR TECHNICAL DEPARTMENT ON 01582 544255 FOR SOLUTIONS TO YOUR DEVELOPMENT

©Thermal Economics Ltd. Draft 4 (Issue 2) Sept 2010